

Details of Flats, Tentative Price and Locality Codes				
S. No.	Locality	No. of Flats *	Approx. Range of Plinth Area of flat (in Sqm.)**	Broad Range of Tentative Disposal Price (Rs. In Lakh)**
<b>HIG/ 3 BHK</b>				
1.	Narela, Pocket 3, Sector A1 to A4 <sup>#</sup>	368	160.539 to 184.829	150 to 173
2.	Narela, Pocket 4, Sector A1 to A4 <sup>#</sup>	352	160.554 to 185.07	144 to 165
3.	Narela, Pocket 7, Sector A1 to A4 <sup>##</sup>	192	160.931 to 185.221	140 to 161
4.	Narela, Pocket 14, Sector A1 to A4 <sup>#</sup>	272	160.441 to 184.731	141 to 161
	<b>TOTAL HIG</b>	<b>1184</b>		
<b>MIG/ 2 BHK</b>				
5	Narela, Pocket 3, Sector A1 to A4 <sup>#</sup>	648	126.096 to 140.496	108 to 120
6	Narela, Pocket 4, Sector A1 to A4 <sup>#</sup>	512	126.096 to 140.496	110 to 122
7	Narela, Pocket 7, Sector A1 to A4 <sup>##</sup>	328	126.397 to 140.496	105 to 117
8	Narela, Pocket 14, Sector A1 to A4 <sup>#</sup>	488	118.259 to 140.496	100 to 118
	<b>TOTAL MIG</b>	<b>1976</b>		
<b>LIG/ 1 BHK</b>				
9	Narela, Pocket 1,3,4,5,6 Sector G2 <sup>##</sup>	7913	49.9	20.90 to 21.00
10	Narela, Pocket 6,7,11 Sector G7 <sup>##</sup>	11,767	49.9	25.2
11	Dwarka, Sector 14, Phase II <sup>^^</sup>	316	88.16 to 100.02	77 to 88
	<b>TOTAL LIG</b>	<b>19,996</b>		
<b>EWS/ 1 BHK</b>				
12	Narela, Pocket 3, Sector A1 to A4 <sup>#</sup>	384	65.841 to 66.321	35
13	Narela, Pocket 4, Sector A1 to A4 <sup>#</sup>	320	61.51 to 61.99	33
14	Narela, Pocket 7, Sector A1 to A4 <sup>##</sup>	200	61.48 to 61.96	32
15	Narela, Pocket 14, Sector A1 to A4 <sup>#</sup>	296	61.25 to 61.73	32
16	Narela, Pocket 1,3,4,5,6 Sector G2 <sup>##</sup>	1,696	34.76 to 35.08	11.54 to 11.67
17	Narela, Pocket 6,7,11 Sector G7 <sup>##</sup>	2,580	34.76 to 35.08	14
18	Dwarka, Sector 19B, Phase-II <sup>^</sup>	728	50.043	26
19	Dwarka, Sector 14, Phase II <sup>^^</sup>	1,008	57.94 to 58.93	33.6 to 34.5
20	Loknayakpuram <sup>^^^</sup>	224	55.35 to 61.17	29 to 32
	<b>TOTAL EWS</b>	<b>7,436</b>		
	<b>GRAND TOTAL</b>	<b>30,592</b>		

**Note: -**

\* Number of flats may change at the time of launching of the scheme and number of flats at particular Locality/Zone may be changed subject to availability. **The flats will be offered in phased manner depending on demand situation with advanced notice for the same.**

\*\* Plinth Area includes common area and it may vary from flat to flat.

\*\*\* The demand letter will be issued as per actual plinth area of the individual flat & **therefore the disposal price of flats may vary depending on respective plinth area.** The tentative cost does not include conversion charges and water connection charge.

<sup>^</sup> These flats are likely to be handed over in June, 2024

<sup>^^</sup> These flats are likely to be handed over in April, 2024

<sup>^^^</sup> These flats are likely to be handed over in March, 2024

<sup>#</sup> The flats in Pocket 3, 4 & 14, Sector A1 to A4 are likely to be handed over in February, 2024.

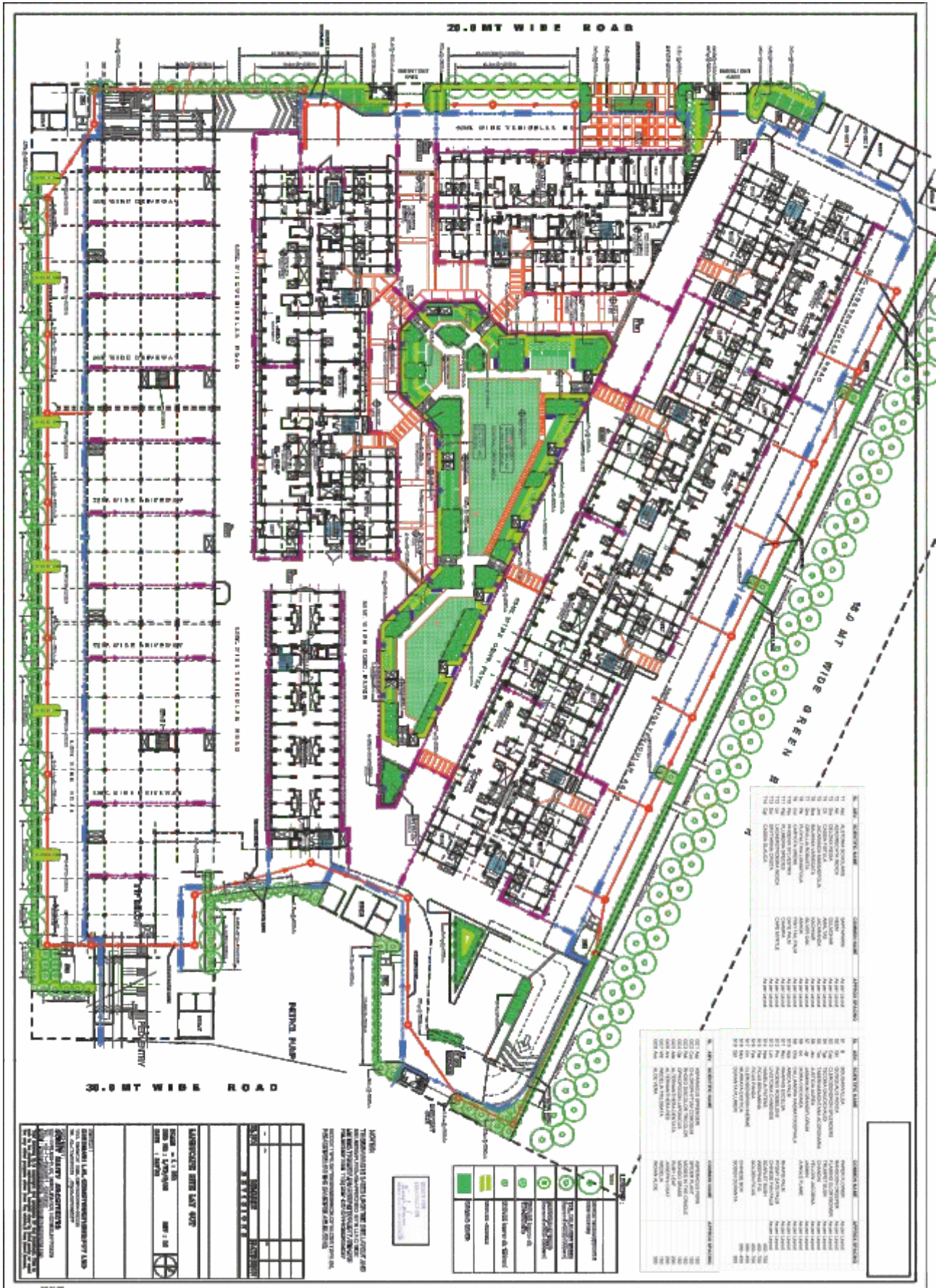
<sup>##</sup> These flats are in ready to move in condition.

- The Standard/ Typical unit plan of Housing in respect of localities are annexed.

UNIT PLAN OF "EWS FLAT" LOK NAYAK PURAM



### SITE LAYOUT LOK NAYAK PURAM



**SECTOR 14 DWARKA**



**DETAIL OF EWS UNIT**

**CARPET AREA UNIT ( Without walls ) = 29.050 SQM**

**BALCONY AREA = 8.55 SQM**

**CARPET AREA UNIT ( AS PER RERA ) = 30.76 SQM**

**BALCONY AREA = 9.41 SQM**

SECTOR 14 DWARKA



**DETAIL OF CAT-II UNIT  
(ONE BED ROOM DU)-TYPE -03**

**CARPET AREA UNIT ( Without walls ) = 52.315 SQM**

**BALCONY AREA = 16.52 SQM**

**CARPET AREA UNIT ( AS PER RERA ) = 54.13 SQM**

**BALCONY AREA = 19.04 SQM**

**SECTOR 14 DWARKA**



**DETAIL OF CAT-II UNIT  
(ONE BED ROOM DU)-TYPE -02**

**CARPET AREA UNIT ( Without walls ) = 52.315 SQM**

**BALCONY AREA = 12.50 SQM**

**CARPET AREA UNIT ( AS PER RERA ) = 54.13 SQM**

**BALCONY AREA = 14.32 SQM**

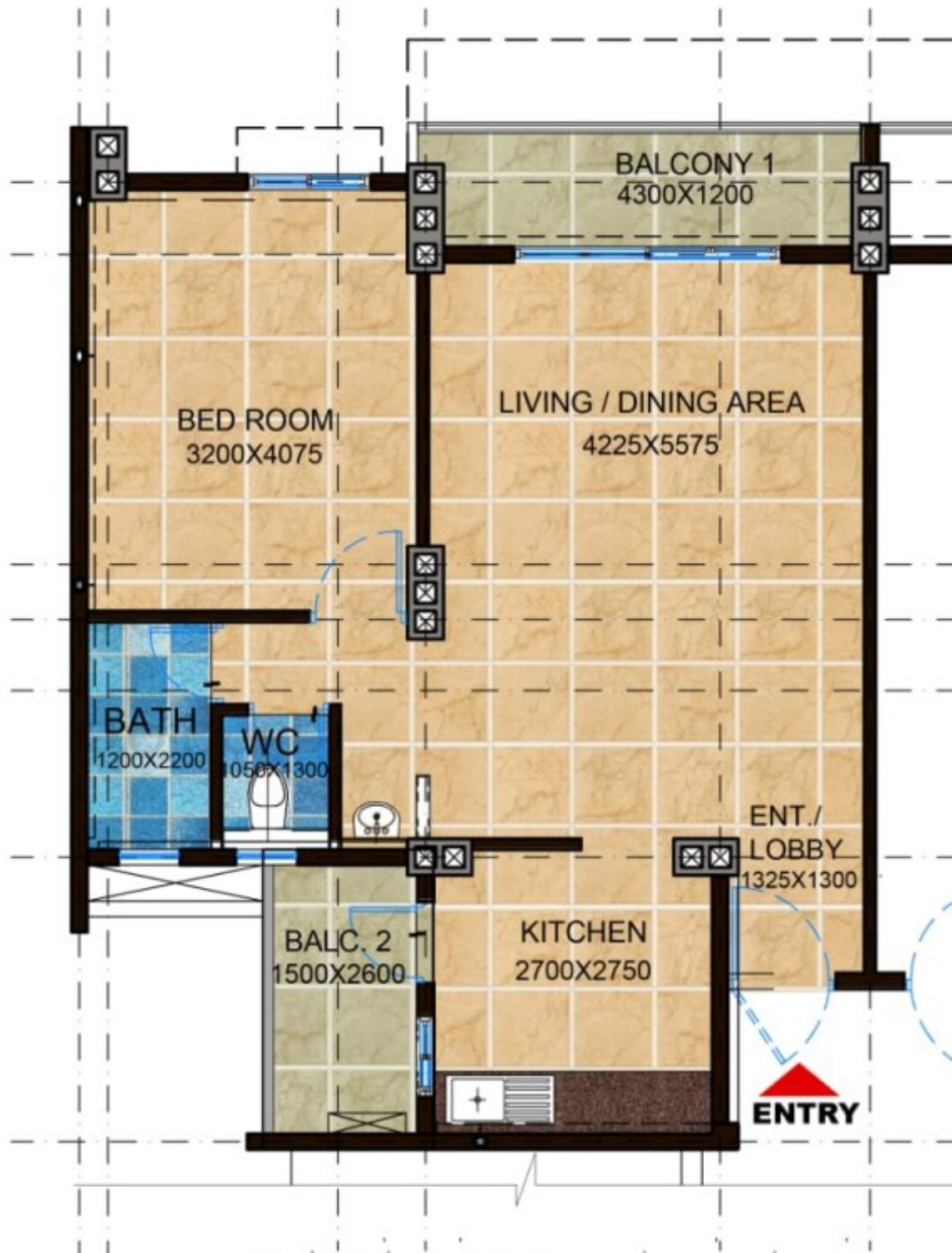
SECTOR 14 DWARKA

DDA

SEC-14, POC 5



**SECTOR 14 DWARKA**



**DETAIL OF CAT-II UNIT  
(ONE BED ROOM DU)-TYPE -01**

**CARPET AREA UNIT ( Without walls ) = 52.315 SQM**

**BALCONY AREA = 9.06 SQM**

**CARPET AREA UNIT ( AS PER RERA ) = 54.13 SQM**

**BALCONY AREA = 10.74 SQM**



## SECTOR A1 TO A4, NARELA (POCKET 3 - Layout Plan)

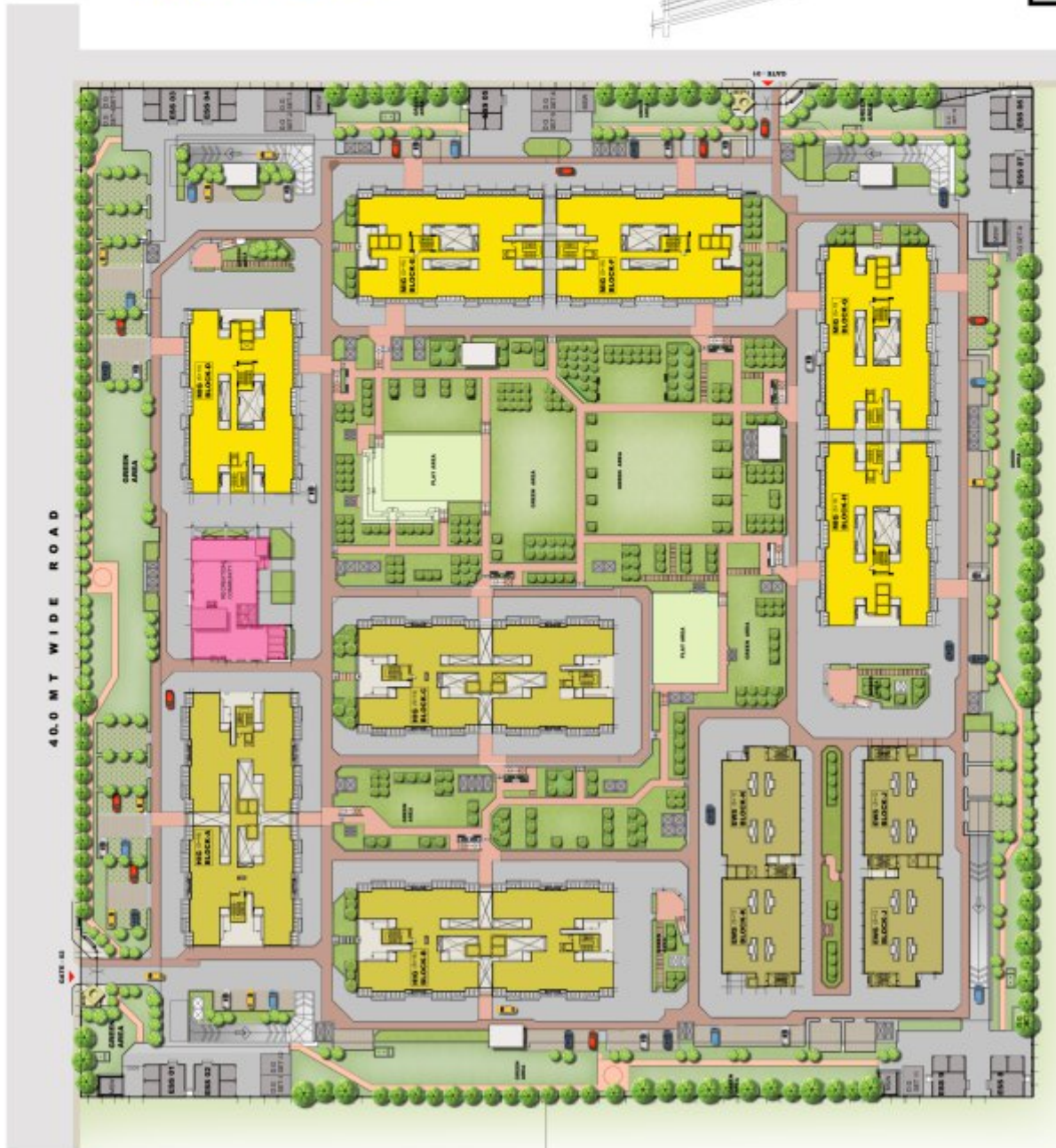
**DDA**

**LEGEND**

	3BHK BLOCK
	2BHK BLOCK
	EWS BLOCK
	COMMUNITY FACILITY BLOCK AND SHOPS
	ROADS
	PEDESTRIAN WALKWAY
	COMMUNITY GREEN
	AMPHITHEATER/PLAY AREA
	UTILITY / SERVICE



**HOUSING POCKET-3,  
SECTOR A-1 TO A-4, NARELA**



## SECTOR A1 TO A4, NARELA (POCKET 3 - Layout Plan)



## SECTOR A1 TO A4, NARELA (POCKET 7 - Layout Plan)

**DDA**

**LEGEND**

	3BHK BLOCK
	2BHK BLOCK
	EWS BLOCK
	COMMUNITY FACILITY BLOCK AND SHOPS
	ROADS
	PEDESTRIAN WALKWAY
	COMMUNITY GREEN
	UTILITY / SERVICE



**HOUSING POCKET-7,  
SECTOR A-1 TO A-4, NARELA**

## SECTOR A1 TO A4, NARELA (POCKET 14 - Layout Plan)

DDA



**LEGEND**

- 3BHK BLOCK
- 2BHK BLOCK
- EWS BLOCK
- COMMUNITY FACILITY BLOCK AND SHOPS
- ROADS
- PEDESTRIAN WALKWAY
- COMMUNITY GREEN
- AMPHITHEATER/PLAY AREA
- UTILITY / SERVICE



**HOUSING POCKET-14,  
SECTOR A-1 TO A-4, NARELA**

SECTOR A1 TO A4, NARELA



**2BHK UNIT (TYPICAL)  
GROUP HOUSING POCKETS 3,4,7,14  
SECTOR A1 TO A4, NARELA**

## SECTOR A1 TO A4, NARELA



**VIEWS : 2BHK UNIT (TYPICAL)  
GROUP HOUSING POCKETS 3,4,7,14  
SECTOR A1 TO A4, NARELA**



**SECTOR A1 TO A4, NARELA**



**3BHK UNIT (TYPICAL)  
GROUP HOUSING POCKETS 3,4,7,14  
SECTOR A1 TO A4, NARELA**

## SECTOR A1 TO A4, NARELA



**VIEWS : 3BHK UNIT (TYPICAL)  
GROUP HOUSING POCKETS 3,4,7,14  
SECTOR A1 TO A4, NARELA**



## SECTOR A1 TO A4, NARELA



**EWS UNIT (TYPICAL)**  
**GROUP HOUSING POCKETS 3,4,7,14**  
**SECTOR A1 TO A4, NARELA**

## SECTOR A1 TO A4, NARELA



**VIEWS : EWS UNIT (TYPICAL)  
GROUP HOUSING POCKETS 3,4,7,14  
SECTOR A1 TO A4, NARELA**



## SECTOR A1 TO A4, NARELA



**VIEWS : EWS UNIT (TYPICAL)  
GROUP HOUSING POCKETS 3,4,7,14  
SECTOR A1 TO A4, NARELA**



## SECTOR G2-G6, NARELA (Pocket 1 - Layout Plan)

**DDA**

**LEGENDS**

	LIG
	EWS
	COMMUNITY FACILITY BLOCK AND SHOPS
	ROADS
	PEDESTRIAN WALKWAY
	COMMUNITY GREEN
	UTILITY / SERVICE



**HOUSING POCKET I,  
SECTOR G-2 TO G-6, NARELA**



## SECTOR G2-G6, NARELA (Pocket 3 - Layout Plan)

**DDA**

- LEGENDS**
-  LIG
  -  EWS
  -  COMMUNITY FACILITY  
BLOCK AND SHOPS
  -  ROADS
  -  PEDESTRIAN WALKWAY
  -  COMMUNITY GREEN
  -  UTILITY / SERVICE



POCKET III, SEC G-2, G-6, NARELA



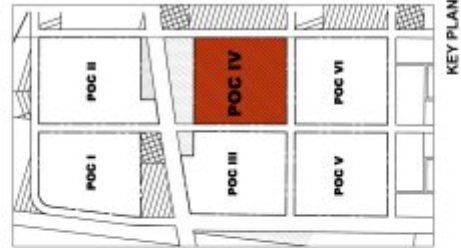
KEY PLAN

**HOUSING POCKET III,  
SECTOR G-2 TO G-6, NARELA**

## SECTOR G2-G6, NARELA (Pocket 4 - Layout Plan)

**DDA**

- LEGENDS**
-  LIG
  -  EWS
  -  COMMUNITY FACILITY BLOCK AND SHOPS
  -  ROADS
  -  PEDESTRIAN WALKWAY
  -  COMMUNITY GREEN
  -  UTILITY / SERVICE



KEY PLAN

**HOUSING POCKET IV,  
SECTOR G-2 TO G-6, NARELA**



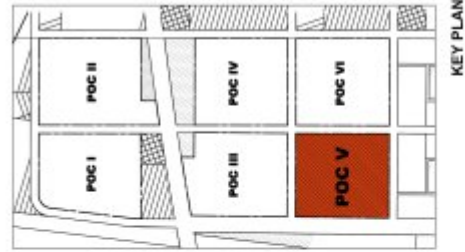
POCKET IV, SEC G-2, G-6, NARELA

## SECTOR G2-G6, NARELA (Pocket 5 - Layout Plan)

**DDA**

**LEGENDS**

	LIG
	EWS
	COMMUNITY FACILITY BLOCK AND SHOPS
	ROADS
	PEDESTRIAN WALKWAY
	COMMUNITY GREEN
	UTILITY / SERVICE



KEY PLAN

**HOUSING POCKET V,  
SECTOR G-2 TO G-6, NARELA**



POCKET V, SEC G-2, G-6, NARELA

## SECTOR G2-G6, NARELA (Pocket 6 - Layout Plan)

**DDA**

- LEGENDS**
- LIG
  - EWS
  - COMMUNITY FACILITY BLOCK AND SHOPS
  - ROADS
  - PEDESTRIAN WALKWAY
  - COMMUNITY GREEN
  - UTILITY / SERVICE



KEY PLAN

**HOUSING POCKET VI,  
SECTOR G-2 TO G-6, NARELA**



20.0 MT WIDE ROAD POCKET VI, SEC G-2, G-6, NARELA



**SECTOR G2-G6, NARELA**



**EWS UNIT  
Pocket – 1,3,4,5,6 Sector G2-G6, Narela**

## SECTOR G2-G6, NARELA



**LIG UNIT**  
**Pocket – 1,3,4,5,6 Sector G2-G6, Narela**

## SECTOR G7-G8, NARELA (Pocket - 6 - Layout Plan)

**DDA**

- LEGENDS**
-  LIG
  -  EWS
  -  COMMUNITY FACILITY BLOCK AND SHOPS
  -  ROADS
  -  PEDESTRIAN WALKWAY
  -  COMMUNITY GREEN
  -  UTILITY / SERVICE



KEY PLAN

**HOUSING POCKET VI,  
SECTOR G-7 TO G-8, NARELA**



## SECTOR G7-G8, NARELA (Pocket - 7 - Layout Plan)

**DDA**

**LEGENDS**

	LIG
	EWS
	COMMUNITY FACILITY BLOCK AND SHOPS
	ROADS
	PEDESTRIAN WALKWAY
	COMMUNITY GREEN
	UTILITY / SERVICE



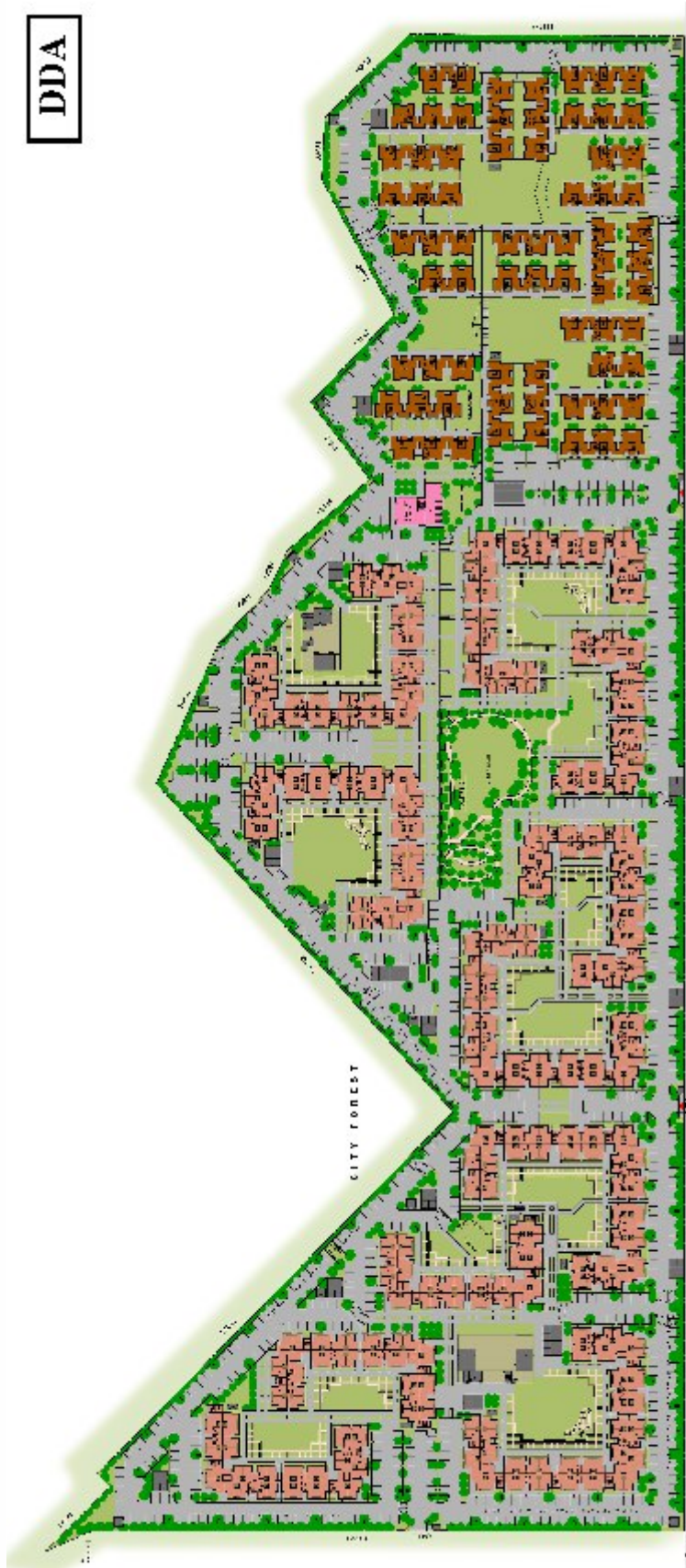
KEY PLAN

**HOUSING POCKET VII,  
SECTOR G-7 TO G-8, NARELA**

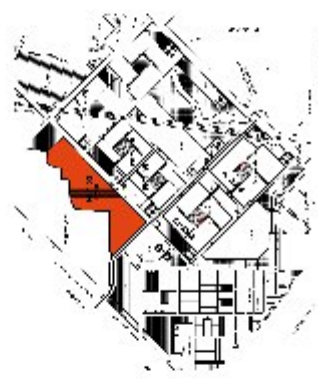


## SECTOR G7-G8, NARELA (Pocket - 11 - Layout Plan)

**DDA**



**HOUSING POCKET XI,  
SECTOR G-7 TO G-8, NARELA**



KEY PLAN

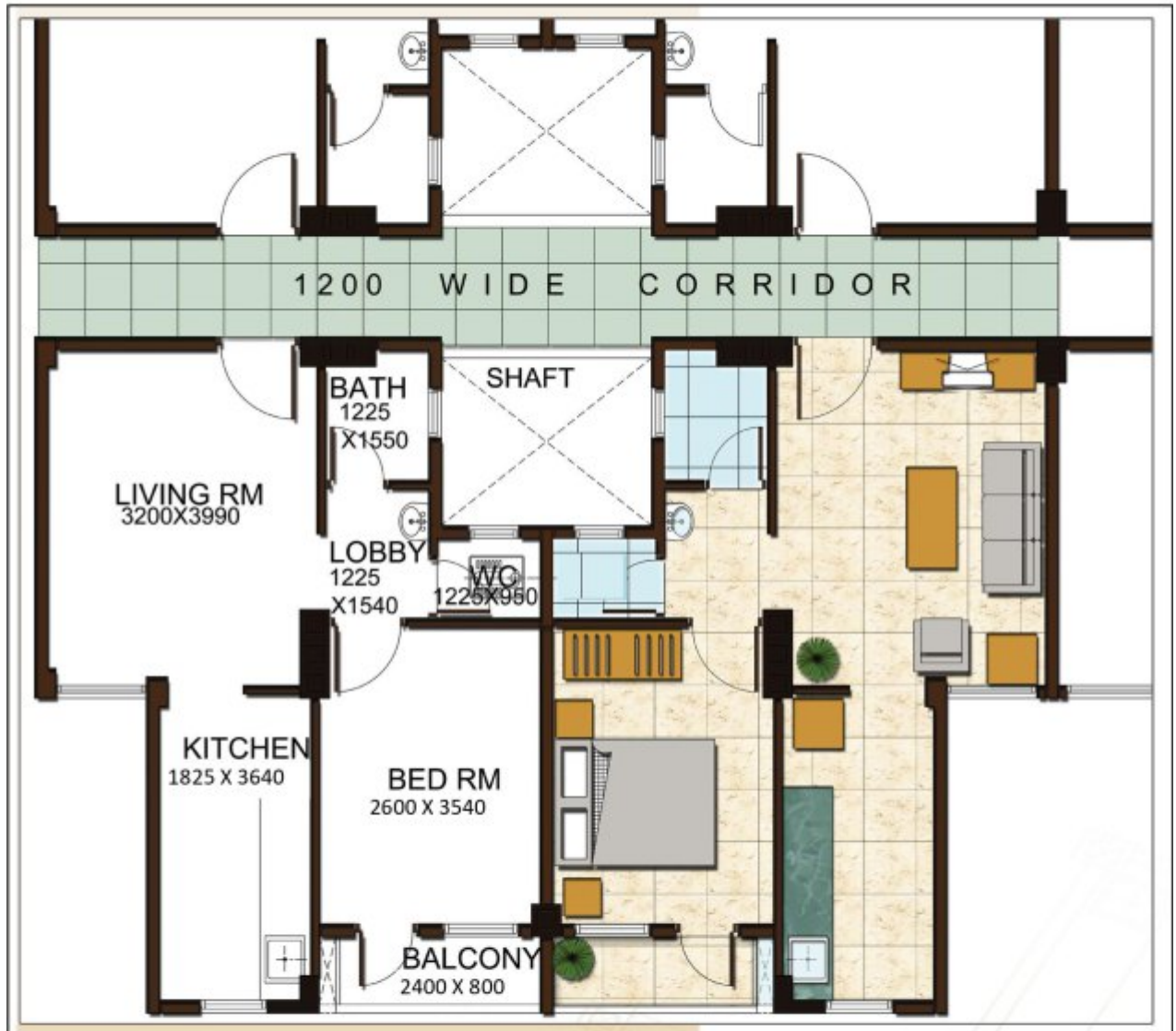
- LEGENDS**
- LIG
  - EWS
  - COMMUNITY FACILITY  
BLOCK AND SHOPS
  - ROADS
  - PEDESTRIAN WALKWAY
  - COMMUNITY GREEN
  - UTILITY / SERVICE

**SECTOR G7-G8, NARELA**



**EWS UNIT  
Pocket – 6,7,11 Sector G7-G8, Narela**

## SECTOR G7-G8, NARELA

**LIG UNIT**  
**Pocket – 6,7,11 Sector G7-G8, Narela**

# Dwarka 19B

**E.W.S UNIT-1**  
 CARPET AREA = 26,130 SQ.M.  
 WALL AREA = 4,927 SQ.M.  
 BALCONY AREA = 6,100 SQ.M.  
 UNIT AREA = 37,157 SQ.M.

**E.W.S UNIT-2**  
 CARPET AREA = 26,200 SQ.M.  
 WALL AREA = 4,987 SQ.M.  
 BALCONY AREA = 6,100 SQ.M.  
 UNIT AREA = 37,287 SQ.M.

**WORKING DRAWING**

**AGENCY:** SIMPLEX INFRASTRUCTURES LTD., VAKUNTUHI 206, FLOOR 89, NEHRU PLACE, NEW DELHI, 110019

**ARCHITECT:** DEVELOPMENTS CONSULTANT (A) ARCHITECTS & URBAN DESIGNERS 209 - C, MASJID MOTH, 1<sup>ST</sup> BLOCK, N.D.S.E.-II) PHONE: 011-26254686, 16166894

**CLIENT:** EXECUTIVE ENGINEER D.D.A W.D - 15 NEW DELHI.

**PROJECT:** CONSTRUCTION OF H.I.G (MULTI STOREY) HOUSES IN SECTOR -19B DWARKA, PHASE-II

**SHEET TITLE:** TYPICAL EWS UNIT PLAN

**SCALE:** 1:100

**DATE:** 04-11-2019

**CHECKED:** BHUSHAN

**PROJECT NO./DW/31M-4-2014**

**TABLE 1: AREA DETAIL (CARPET AREA)**

S.NO.	L	B	AREA (SQ.M.)
C1	2,785	4,820	13,423
C2	1,800	1,200	2,160
C3	1,115	1,325	1,476
C4	1,205	1,000	1,205
C5	2,465	2,975	7,333
C6	1,150	1,000	1,150
<b>TOTAL</b>			<b>26,130</b>

**TABLE 2: AREA DETAIL (BALCONY AREA)**

S.NO.	L	B	AREA (SQ.M.)
B1	0,250	1,300	325
B2	0,515	6,52	3,348
<b>TOTAL</b>			<b>6,100</b>

**TABLE 3: AREA DETAIL (WALL AREA)**

S.NO.	L	B	AREA (SQ.M.)
W1	1,800	1,200	2,160
W2	1,115	1,325	1,476
W3	1,205	1,000	1,205
W4	2,465	2,975	7,333
W5	1,150	1,000	1,150
<b>TOTAL</b>			<b>4,927</b>